

Marktaandeel Nederland

1. Airwatch (VMWare)
2. MobiControl
3. MobileIron

Lees verder voor de resultaten uit ons onderzoek.

ENTERPRISE MOBILITY MANAGEMENT

More information? Contact us at: 020-8080742 or info@linden-it.com

LindenIT, for trained IT professionals
simply the best professionals

Enterprise Mobility Management

Enterprise mobility management (EMM) solutions are used by organizations to manage the mobile devices of their users:

- Provisioning: configure devices and applications for deployment and use, manage updates, and assist with device upgrade and retirement.
- Auditing, tracking and reporting: track device inventories, settings and usage to verify compliance with enterprise policies and manage assets.
- Enterprise data protection: mitigate data loss, theft, employee termination or other incidents by adding controls for data encryption, data access rights, shared devices, application wrapping and containment, and device lockdown.
- Support: help IT departments troubleshoot mobile device problems through inventory, analytics and remote actions.

Five main technical capabilities, modules, help IT organizations perform these services. Some of these capabilities overlap and Several EMM players are moving upstream with products to manage traditional PCs. And, as you can expect, 'traditional' service desk solutions start including support for mobile devices as well.

Mobile identity (MI)

To ensure that only trusted devices and users access enterprise applications by managing identity and access management functions, such as user and device certificates, app code signing, authentication and single sign-on (SSO).

Mobile device management (MDM)

inventory, OS configuration management, device provisioning and deprovisioning, remote wipe, and remote viewing/control for troubleshooting.

Mobile application management (MAM): applies management and policy control functionality to individual applications.

Functionalities can include:

- An enterprise app store to deploy in-house-developed and commercially sourced applications for business purposes.
- Support for the management and distribution of applications by using native OS APIs, such as Android for Work and iOS's Managed App Configuration, as well as the volume purchase of apps for Android, iOS and Windows.

Mobile content management (MCM)

To manage access rules for content distribution on mobile devices:

- Policy enforcement: enforce policies down to individual files, including device-independent encryption keys, authentication, file-sharing rules and copy/paste restriction.
- Content push: enforces rules for push-based file distribution, replacement and deletion.
- Integration: Beyond basic file access policies, adding mobile compatibility for third-party rights management systems, enterprise data loss protection (DLP) and enterprise digital rights management (EDRM)

Enterprise Mobility Management

Inleiding

Het zakelijk gebruik van IT oplossingen beperkt zich al lang niet meer tot de traditionele desktops en laptops. Mobiele devices zijn niet meer weg te denken uit de dagelijkse werkzaamheden van zakelijke IT gebruikers. En hoewel de mogelijkheden van mobiele devices tegenwoordig bijna vergelijkbaar zijn met de desktops en laptops, is het beheer ervan voor veel organisaties een grote uitdaging. De aard van de devices maakt ze moeilijk centraal te managen.

Toch zijn er een aantal tools op de markt die Enterprise Mobility Management sterk vereenvoudigen voor een IT afdeling. LindenIT heeft een onderzoek gedaan naar het gebruik van deze systemen. In dit whitepaper worden de meest gebruikte tools en de resultaten van ons onderzoek gepresenteerd.

Inhoud

- **Resultaat enquête naar het gebruik van Mobile Device Management in Nederland**
- **3 wereldwijd succesvolle oplossingen voor Mobile Device Management**

3 tools die aan bod komen



Veelzijdige oplossing van VMware

The logo for SOTI, consisting of the word "SOTI" in a large, bold, blue sans-serif font, with a registered trademark symbol (®) to the upper right.

Sterk in Android



Geprezen door Gartner

Neem contact op:

Wilt u meer weten over Enterprise Mobility Management of de inzet van IT professionals met kennis hiervan. Neem dan contact op met:



Vera van Santbrink
vera@linden-it.com

020-8080472

More information? Contact us at: **020-8080742** or info@linden-it.com

LindenIT, for trained IT professionals
simply the best professionals

Mobile Device Management Systemen

Enquête

In ons laatste onderzoek, onder meer dan 1000 organisaties in Nederland, hebben wij het gebruik van Mobile Device Management systemen onderzocht. In dit rapport staan de resultaten.

Inhoud

- **Resultaten onderzoek**
- **3 succesvolle Mobile Device Management systemen**

Gebruik MDM Systemen

1. Ja 56%
2. Nee 44%

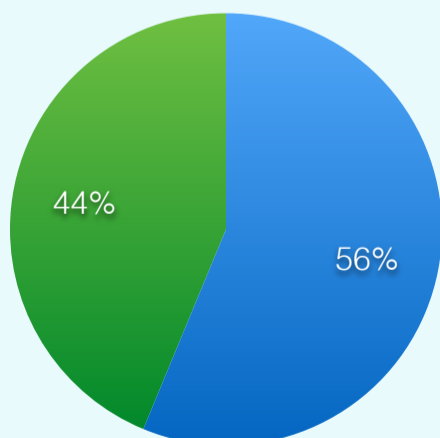
Meest gebruikte MDM systemen

1. Airwatch (VMWare) 34%
2. MobiControl (SOTI) 21%
3. MobileIron 14%

Respondenten:

Gebruik Mobile Device Management

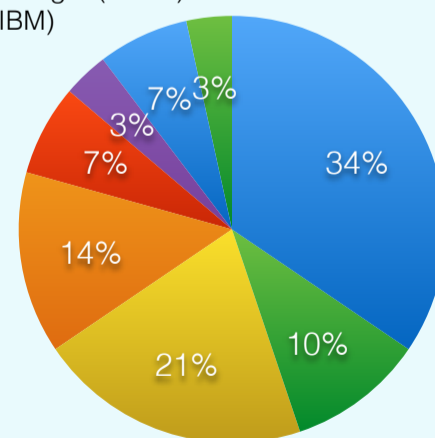
- Ja
- Nee



Doelgroep:

Meest gebruikte MDM systemen

- Airwatch (VMWare)
- Xen Mobile (Citrix)
- MobiControl (SOTI)
- MobileIron
- Mobile Device Management Plus (ManageEngine)
- Endpoint Manager (Radia)
- MaaS360 (IBM)
- Gsuite



Onder de respondenten gebruikt iets meer dan de helft een Mobile Device Management systeem. Airwatch is het meest gebruikte systeem.

More information? Contact us at: 020-8080742 or info@linden-it.com

Mobile Device Management Systemen

Enquête

In ons laatste onderzoek, onder meer dan 1000 organisaties in Nederland, hebben wij het gebruik van Mobile Device Management systemen onderzocht. In dit rapport staan de resultaten.

Inhoud

- **Resultaten onderzoek**
- **3 succesvolle Mobile Device Management systemen**

Aantal medewerkers organisatie

1. 251-1000 30%
2. Meer dan 1000 44%
3. 51-250

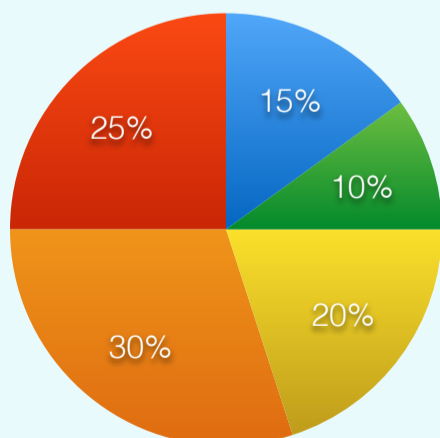
Meest gebruikte devices

1. Apple iPhone 27%
2. Apple iPad 28%
3. Android telefoon 20%

Respondenten:

Aantal medewerkers organisatie

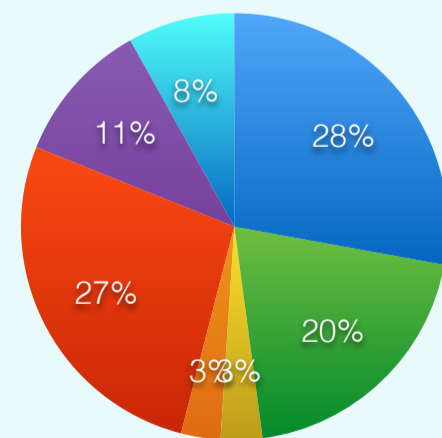
- 1-10
- 11-50
- 51-250
- 251-1000
- meer dan 1000



Doelgroep:

Welke mobile devices

- Apple iPhone
- Android telefoon
- Blackberry
- Windows phone
- iPad
- Android tablet
- Windows tablet



Onder de respondenten vallen voornamelijk grote bedrijven. Onder deze partijen worden Apple iPhone en iPad het meest gebruikt.

More information? Contact us at: 020-8080742 or info@linden-it.com



Company story

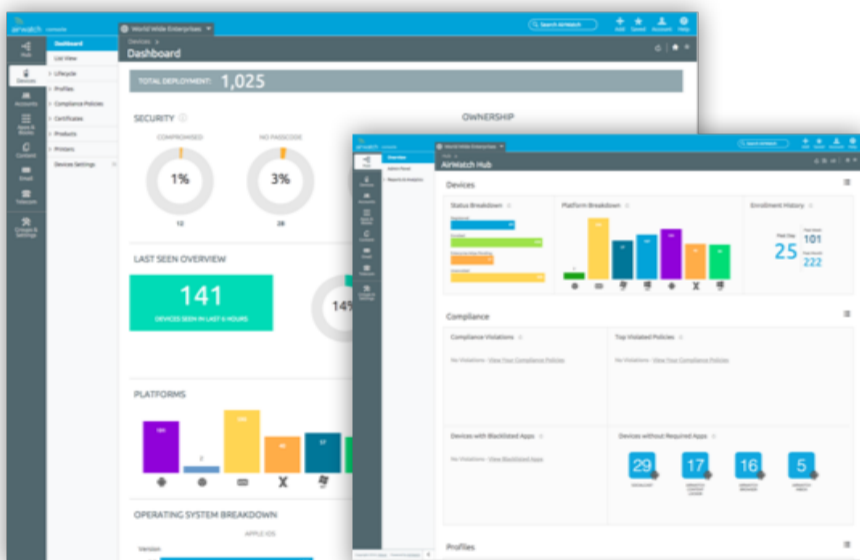
VMware AirWatch is an Atlanta-based provider of enterprise mobility management (EMM) software and standalone management systems for content, applications and email.

AirWatch was founded in 2003 as Wandering WiFi by John Marshall, who served as president and CEO. Since 2006 Alan Dabbieri was the chairman. In February 2013, AirWatch received its first round of funding, a \$200 million investment from Insight Venture Partners and Accel.



John Marshall
Founder of Airwatch

In July 2013, the company acquired Motorola Solutions's MSP (Mobility Services Platform) and extended management capabilities to ruggedized devices. On February 24, 2014 VMware acquired AirWatch for approximately \$1.181B in cash and approximately \$364M of installment payments and assumed unvested equity. As of 2016 AirWatch became fully integrated into VMware and completely re-branded itself as VMware AirWatch.



Top reasons to choose

- **The dashboard on the AirWatch console is very easy to use and will show problems based on colors.**
- **Tight integration with online services and a constantly expanding portfolio of supported Software-as-a-Service (SaaS) applications for single sign-on**
- **Large-scale deployments**
- **Zero-day support of new OSs and expansion into the management of Internet of Things (IoT) devices**

Pricing

Green Suite

\$4.33
per device/month
Mobile Device Mgmt
Custom App Catalog

Orange Suite

\$5.08
per device/month
Green Suite plus:
VMware Boxer

Blue Suite

\$6.33
per device/month
Plus: Identity, Content
and Browsing Mgmt

Yellow Suite

\$9.33
per device/month
Complete Enterprise
Mobility Management

Product Highlights

Mobility Management

Support every endpoint and every user from a single management console. The dashboard on the AirWatch console gives you the ability to quickly scan for problems based on colors. Clicking on any of the colors will drill down into that specific issue with more detailed information underneath.

Enterprise Security

Security at every layer for complete protection of your corporate data. The multi-layered approach to security encrypts sensitive company data and secures access from the user all the way to the network.

SSO Capability

AirWatch provides a basic SSO capability at their lowest price point with a more full-featured version available through VMware Identity Manager, which comes with their Blue level of the management suite. At the Blue level, you also get app wrapping, a managed browser, and their secure content locker view.

Reporting

AirWatch detail screens include the ability to export the data to a CSV file to use in reporting or for further analysis. It's also possible to build filters to show devices by any number of different categories to get a quick report on problems, compliancy issues, or any one of a number of custom attributes.

More information? Contact us at: 020-8080742 or info@linden-it.com

LindenIT, for Airwatch trained IT professionals
simply the best professionals

SOTI®

Company story

Carl Rodrigues, founder (1995) and chief executive of SOTI, has a classic story. While acting as an IT consultant, he developed solutions for managing mobile device screens from a desktop, an innovation that has put him ahead in what is now one of the largest growing markets – enterprise mobility management.

With a passion for innovation, and a relentless drive for quality, he now leads one of the fastest growing, profitable, and self-sustaining companies in Canada, and continues to build on the company's early lead in the mobile enterprise market.



Carl Rodrigues
SOTI Founder & CEO

Since launching its first consumer product which evolved into SOTI MobiControl, its flagship enterprise mobility management solution for enterprises, the company has built an A-list of over 15,000 enterprise customers across the globe.

Top reasons to choose

- **SOTI's extensive experience with and comprehensive support for Android**
- **SOTI's remote support capabilities for Android are among the best**
- **Price competitive with the big players including AirWatch**

Pricing

Cloud Based

\$4.00 per device/month

on-premises version is priced by device at \$72 per year plus \$18 for maintenance



Product Highlights

Provisioning

SOTI's rapid provisioning will reduce IT costs and get your devices online in minutes, all with a simple barcode scan. Upon enrollment, each device is automatically configured with the required account information, applications, proxies and VPN settings. Profiles make provisioning hundreds of devices as easy as one.

Security

Protect the integrity of your corporate IT environment. SOTI supports biometric or two-factor authentication to prevent unauthorized access to the mobile device and through it, the corporate network

Management

SOTI makes it easy to enroll, configure, provision, track and remote lock/wipe your mobile devices over the air. By keeping track of your devices it will be easier to plan for replacements and upgrades.

Applications

Regulate the distribution of business applications. Corporate applications can be installed silently and deployed without any employee interaction required.

Retirement

End-of-life your mobile devices securely. The device needs to be backed up. This will make it easier to migrate to a new device by transferring contacts, calendar and content. Once the backup is complete, the device has to be wiped clean from the company's perspective; i.e. all data, agents and applications removed.

More information? Contact us at: 020-8080742 or info@linden-it.com

LindenIT, for SOTI trained IT professionals
simply the best professionals



MobileIron

Company story

MobileIron was founded in 2007 by Ajay Mishra and Suresh Batchu. The company demonstrated significant growth in number of customers, its patent portfolio and the sophistication of its EMM deployments.

MobileIron was the first EMM provider to introduce a Visual Privacy component to its app suite. MobileIron offers broad support for third-party ISV mobile applications and is one of the founding members of the AppConfig standard.



Jay Mishra
Founder of MobileIron

MobileIron continues to receive high marks for its ability to stay current on the latest features across the three major mobile platforms and for its progress in securing U.S. federal certifications. Organizations that want a feature-rich, scalable and stable EMM product that integrates with a diverse ecosystem should consider MobileIron.

Top reasons to choose

- **Leader in the Gartner 2016 Report: Magic Quadrant for Enterprise Mobility Management Suites report for 6 years in a row.**
- **Over 10 million cumulative seats since 2009.**
- **Selected by the global companies in the most highly regulated and security conscious industries, including financial services, healthcare, pharmaceuticals, and federal government agencies**
- **Layered security model that supports integrated Mobile Device, Application and Content Management**

Pricing

EMM
Silver

\$6.33

per device/month

Plus: Identity, Content
and Browsing Mgmt

EMM
Silver

\$6.33

per device/month

Plus: Identity, Content
and Browsing Mgmt

EMM
Silver

\$6.33

per device/month

Plus: Identity, Content
and Browsing Mgmt

Product Highlights

MobileIron Cloud

Combine cloud EMM security with mobile flexibility. Keep all your mobile apps and corporate data safe while freeing users to do great work on their preferred mobile devices. With advanced mobile security capabilities such as posture based access control and selective wipe, you can prevent business data from falling into the wrong hands..

- Deliver MobileIron's layered security platform through a cloud-based mobile device management console.
- Easily distribute policies for email, Wi-Fi, VPN, user passwords, and security to mobile devices.
- Provide secure access to key files and presentations.
- Remotely wipe corporate data whenever a device is lost, stolen, or retired.

MobileIron Core

- Mobile management software engine that enables IT to set policies for mobile devices, applications and content. This enables Mobile Device Management, Mobile Application Management, and Mobile Content Management capabilities
- Integrates with backend enterprise IT platforms such as Active Directory and can be deployed on premise or in the cloud.

MobileIron Sentry

- An additional enterprise mobility management tool is Sentry, an in-line intelligent gateway that manages, encrypts, and secures the traffic between the mobile device and back-end enterprise systems.
- Blocks access to corporate resources if a device falls out of compliance or is not authorized.

MobileIron Client

- Mobile management software installed on end user mobile devices to enforce configuration and security policies set by the IT department. This enables IT to enforce Mobile Device Management (MDM), Mobile Application Management (MAM) and Mobile Content Management (MCM).

More information? Contact us at: 020-8080742 or info@linden-it.com

LindenIT, for MobileIron trained IT professionals

simply the best professionals

LindenIT

Wat doen wij?

Omschrijving

LindenIT is de specialist op het gebied van detachering. Wij detacheren de beste IT professionals. Al onze IT professionals worden opgeleid, zodat zij de juiste kwaliteiten hebben om de opdracht succesvol af te ronden. Daarnaast geven wij intern adviezen over verschillende systemen die een toevoeging aan uw bedrijfsvoering leveren.

Detachering

40 uur per week. Wij leiden IT support en beheer specialisten op tot:

IT Support
Engineer

On site support
Engineer

Systems
Engineer

Network
Engineer

Application
Engineer

DevOps
Engineer

Kortom, wij leveren de beste IT professionals

More information? Contact us at: 020-8080742 or info@linden-it.com

LindenIT, for trained IT professionals
simply the best professionals